



PREFEITURA MUNICIPAL DE PARANAGUÁ
Secretaria Municipal de Educação e Ensino Integral

CADERNO DE ATIVIDADES Nº 11 PARA PROFESSORES CURSISTAS DO CURSO DE LIBRAS- INTERMEDIÁRIO



De 27/07 a 31/07



PREFEITURA MUNICIPAL DE PARANAGUÁ
Secretaria Municipal de Educação e Ensino Integral

REFERENTE AO MÊS DE JULHO

DADOS PESSOAIS

NOME: _____

CURSO: _____

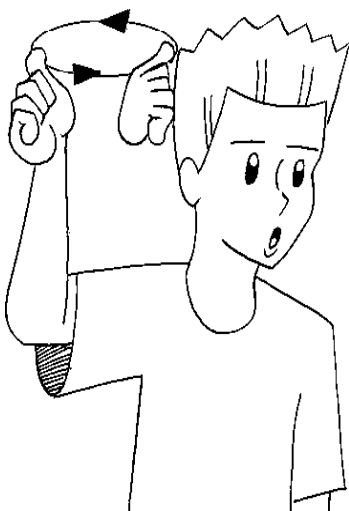
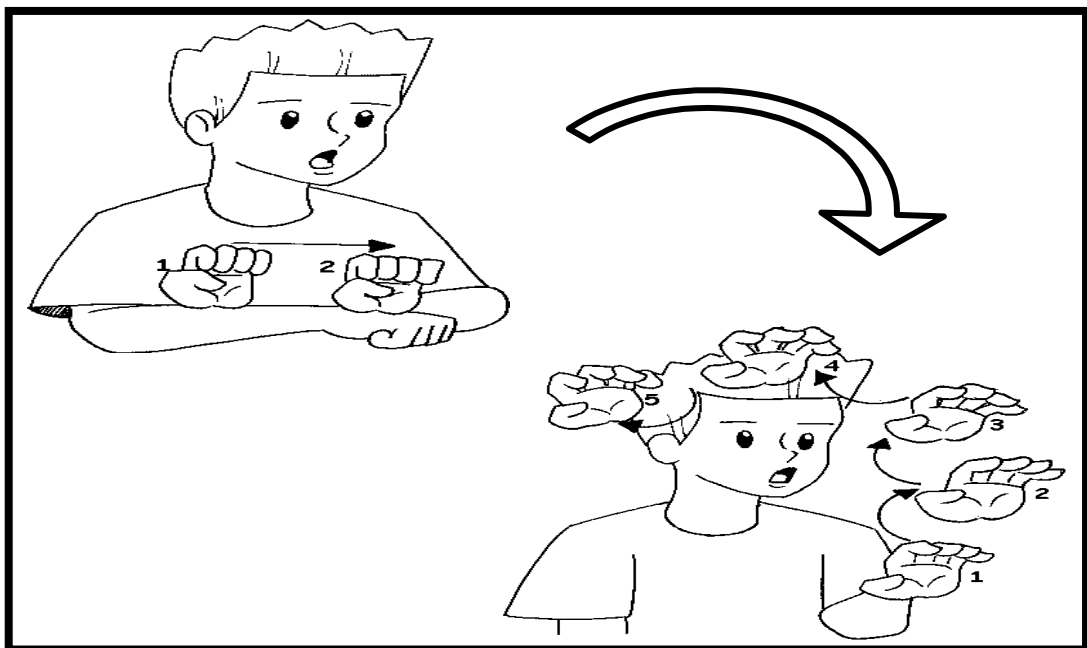
ANO: _____

TURMA: _____

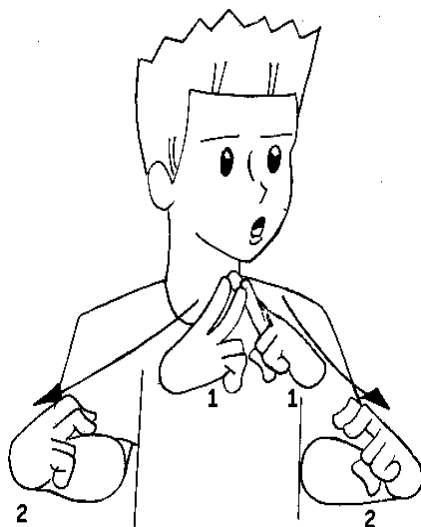
EMAIL: _____

De 27/07 a 31/07

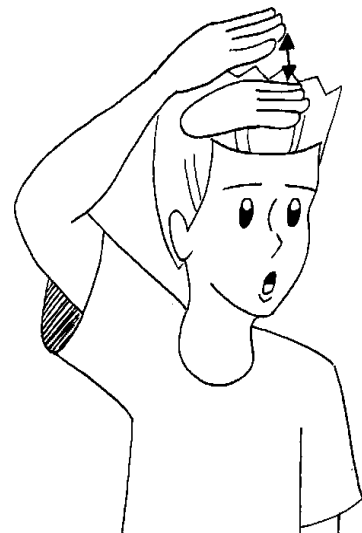
OS ESTADOS BRASILEIROS



RIO GRANDE DO SUL



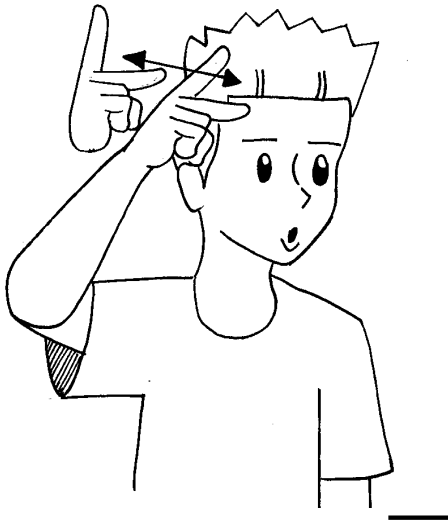
SANTA CATARINA



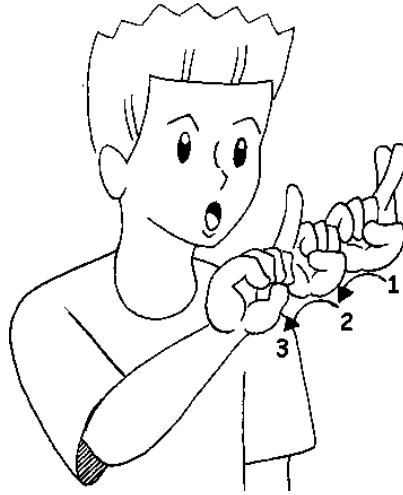
PARANÁ



PREFEITURA MUNICIPAL DE PARANAGUÁ
Secretaria Municipal de Educação e Ensino Integral



SÃO PAULO



RIO DE JANEIRO 1



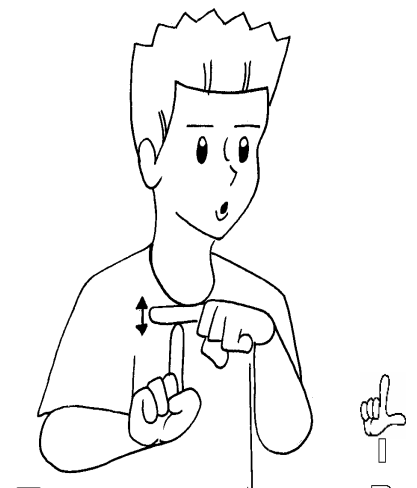
RIO DE JANEIRO 2



MATO GROSSO DO SUL



MATO GROSSO



TOCANTINS

T
O
C
A
N
T
I
N
S



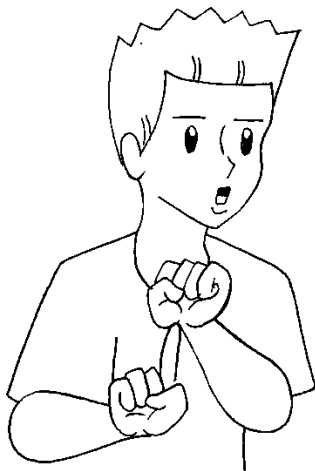
RORAIMA



ACRE



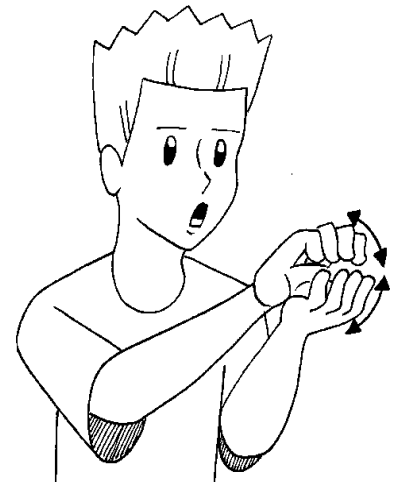
AMAZONAS



SERGIPE



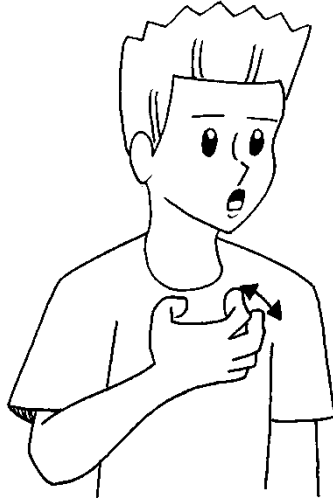
NATAL



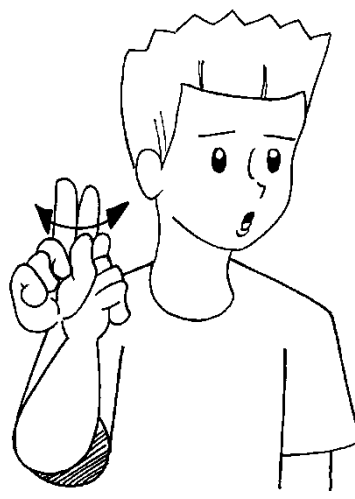
PERNAMBUCO



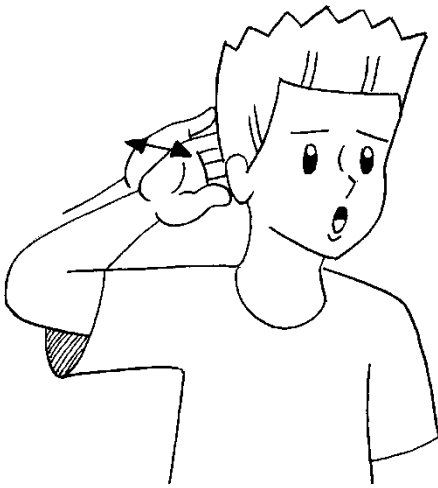
AMAPÁ



BAHIA



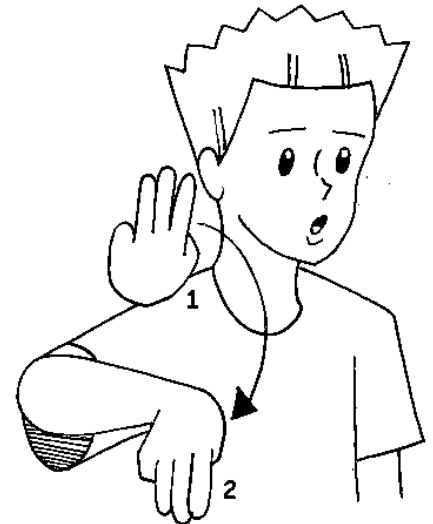
GOIÁS



PARÁ



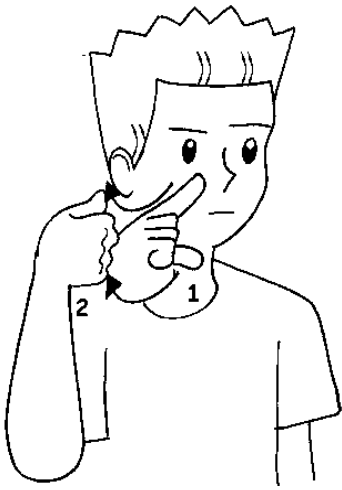
CEARÁ



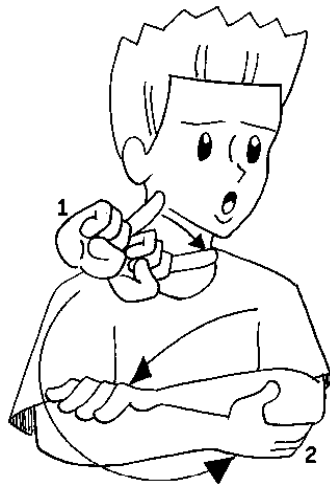
MARANHÃO



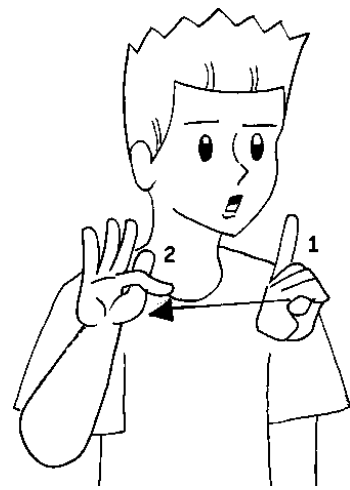
PREFEITURA MUNICIPAL DE PARANAGUÁ
Secretaria Municipal de Educação e Ensino Integral



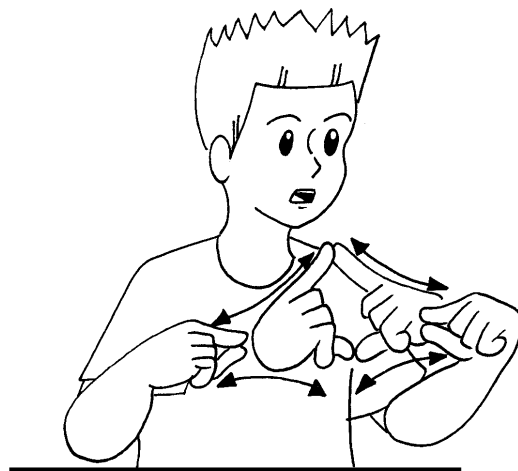
ALAGOAS



MINAS GERAIS



DISTRITO FEDERAL



BRASÍLIA



PREFEITURA MUNICIPAL DE PARANAGUÁ
Secretaria Municipal de Educação e Ensino Integral

✓ Atividades Avaliativas

- ✓ Após visualizar as imagens acima é a sua vez de produzir um vídeo utilizando os, sinais de libras e encaminhá-los para o Whasts do professor Ednilson,(41) **999053544** , contendo na apresentação as seguintes instruções abaixo:

1º- Nome da(o) cursista(o);

2º- Turma: de **segunda e/ou terça?**

3º- Estados Brasileiros: **para realizar a atividades envie por apresentação de sinais as imagens referentes as páginas nº 3 , 4 , 5 , 6 e7;**